

—Off-Highway

Safety and Fleet Management Products



TABLE OF CONTENTS

About Rosco	2	Eye-Max LED & HD LED Mirrors	7
Sun Visors	2	D•CAMS Mirrorless System	7
Arms	3	Safety Sensors	8
Mirrors	4	Backup Camera Systems	9
Remote Mirrors	5	Dual-Vision Recorders	10
Crossview Mirrors	5	Fleet Management Solutions	11

ABOUT ROSCO

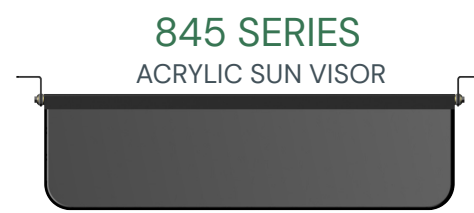
Rosco is the trusted source for superior quality off-highway truck mirrors, arms and bases for over 100 years. Our highly skilled design and application engineers use their expertise to craft the perfect mirror for your truck. With safety at the forefront of our minds, our mirrors meet the highest industry standards for quality and performance. Choose Rosco for the best in performance, durability and style – the essential components for a safer ride.

SUN VISORS

The Rosco heavy duty class of sun visors is designed to stand up to the demands of today's bus industry. Only the finest heavy duty materials are used. The vinyl padding resists scratching, tearing and fading. Our standard line of acrylic sun visors are suitable for use when a see through visor is needed. These visors are an economical alternative to our heavy duty, padded line.



930 SERIES
VINYL SUN VISOR



845 SERIES
ACRYLIC SUN VISOR



Learn more.

ARMS + MOUNTS



CARM1004

Assembly, Arm & Base, 51" Arm, 2 Hole Base, 1.75", Black



CARM1005

Assembly, Arm & Base, 2.36" Hole Pattern, Black, Spring Loaded w Detent



CARM1002

Assembly, Arm & Base, 2.36" Hole Pattern, Black



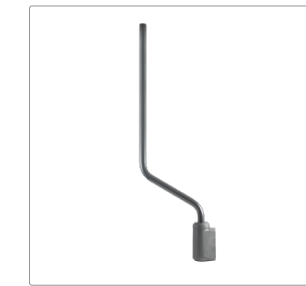
CARM1003

Assy, Arm/Base, .63" Arm, 3 Hole Pattern, 6" H x 10" H, Black



CARM1006

Arm Assembly, Spring Loaded w/ Detent, Off-Road



CARM1007

Off-Road Detent 5/8" Arm w Base Assembly, Arm 2086



CARM1008

Off-Road Detent 5/8" Arm w Base Assembly, Arm 2085



CARM1009

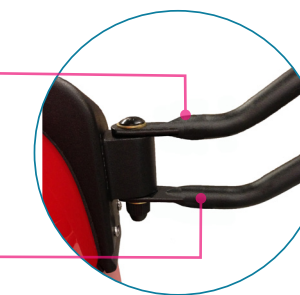
Assembly, Arm & Base .63" Arm, 3 Hole Patter, Black

Non-Detent Swivel Breakaway

Rosco's Non-Detent Swivel Arm Assembly is the industry standard. Its unique sandwich design provides unparalleled mirror assembly adjustment while being powerful enough to hold positions at highway speeds and on off-highway conditions.

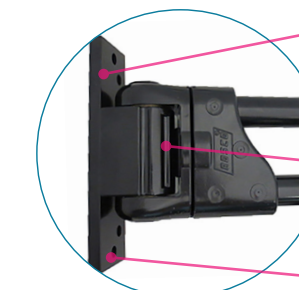
Non-detent swivel arm assembly.

Adjustable by hand, yet powerful enough to hold positions in vigorous settings.



Spring-Break® Detent

The unique Spring Loaded Detent mechanism dampens vibration and keeps the arm locked in position. The heavy-duty cast aluminum mount and swivel provide long lasting reliability and unequalled stability.



Variety of mounting bases and hole configurations.

Multiple custom groove locations for variable detent angles.

Hidden internal spring detent mechanism.

Tubular construction for strength, custom length, and hidden wiring.

MIRRORS

Rosco mirrors are designed and engineered for demanding off-road environments and challenges. Built from heavy-duty safety glass and acrylic shatter proof lenses, Rosco's U.S and European E-marked products serve the off-road and purpose-built industries like no other.



CAEM610D18

Wide Angle/Close Proximity
Ext. Mirror Head, Off Road,
242mm x 161mm



CAEM6090D12

Mirror Head, 240x155
Wide Angle, E Class,
241mm x 158mm



CAEM80110D10

Front Mirror Head,
Off-Road,
294mm x 212mm



CAEM5070D47

Main Ext. Rear View
Mirror Head, Off-Road,
187mm x 121mm



CAEM70100D47

Assembly, Wide Angle
Mirror Head,
274mm x 185mm



CAEM810D70

Main Ext. Rear View
Mirror Head, Off-Road,
256mm x 198mm



CAEM913D70

Main Ext. Rear View
Mirror Head, Off-Road,
239mm x 330mm



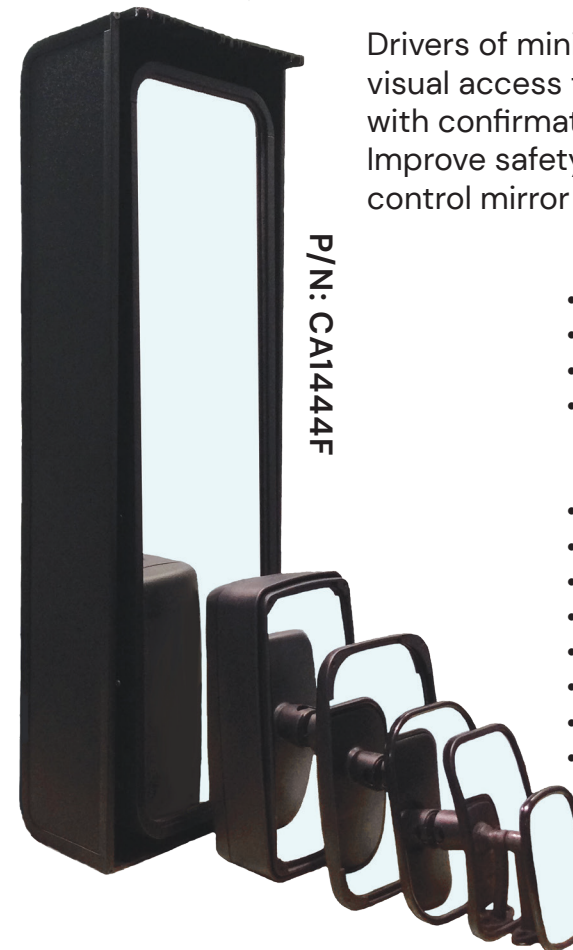
CAEM80130D70

Main Ext. Rear View
Mirror Head, Off-Road,
194mm x 325mm



CAEM5070D47-Y

Ext. Rear View Mirror Head w/ Int.
Mount, 136mm x 187mm



Drivers of mining trucks are often hindered by blind spots and lack of visual access to the ground. The CA1444F Remote Mirror provides drivers with confirmation of work areas and danger zones around the truck. Improve safety for both the driver and ground based with a remote control mirror that fits your truck.

- Dimensions: 44" x 14" x 9" (1118mm x 356mm x 229mm)
- Weight: 70+/- 5lbs. (32 +/- 2 kg)
- Housing Material: Aluminum Alloy & ABS
- Housing Finish: Black polyester powder coating on exposed metal surfaces, tested for corrosion resistance in accordance with ASTM B117-90 (Salt Spray)
- Hoist Attachment Preparation: M12 threaded hole (top access)
- Mount: Saddle clamps (included) for Ø2.0" tubing
- Lens Range of Motion: +/-8° up/down; +/-8° left right
- Operating Temp.: -30° C to 60° C
- Storage Temp.: -40° C to 65° C
- Voltage Range: 12V or 24V
- Amp Draw Motors: 3.5A each at 12V
- Amp Draw Total (with heater function): 12A

* Mirror lens replacement does not require mirror head removal.

CROSSVIEW MIRRORS

Crossview mirrors are crucial for truck operators to safely maneuver large vehicles. Rosco's Eye-Max and HD cross view mirrors both offer low profiles reducing forward blind spots while enhancing coverage around the front of the truck. Both mirrors surpass the System "B" mirror requirements of FMVSS 111 and comply with New York State law S31511-2011 for large trucks.

Safety Cross®

Learn more.

The Safety Cross features quadraspheric lenses that diminish sun glare while showing enhanced reflected image sizes.

Eye-Max®

Learn more.

The Eye-Max® has a revolutionary asymmetric mirror lens to increase image-size and coverage in all areas around the vehicle.

High Definition® HD

Learn more.

The HD's unique lens takes "danger zone" imaging beyond what other crossview mirrors can achieve in image size, focus and overall clarity.

NC100
Crossview convex mirror head, dual ball stud (9.525mm-24), 388mm x 234mm

362RSG
Convex mirror head with 9.525mm-16 ball stud, 305mm diameter

The NC100 and 362RSG are convex mirrors that come equipped with and stamped, steel backs. They are also available with tempered glass. The ball stud mounts make these mirrors heads easily adjustable.



CROSSVIEW MIRRORS WITH INTEGRATED BRIGHT-VISION®

Rosco's Eye-Max® LED and HD LED are crossview mirrors with undermount LED lights to increase visibility in otherwise hard-to-see locations in front of large vehicles.

Features & Benefits

- ✓ LEDs can be automatically activated (ie: with headlights, turn signals, etc.)
- ✓ Each LED head includes:
 - + Brightness: 50 Lumens (each)
 - + Voltage: 9-14V DC
 - + Current draw: 240 mA (total)
 - + IP67 rating
 - + Operating temperature: -40°F to 158°F

- ✓ Heavy duty rebound technology.
- ✓ No damage to vehicle hood.
- ✓ Enhanced definition (larger image) of pedestrians passing through the danger zones around a vehicle.
- ✓ Lower mirror profile reduces forward blind spots and sun glare.
- ✓ Universal wiring included for easy installation on all vehicle types.

NO ILLUMINATION

In low light conditions, the reflection in any mirror is difficult to see. An object or pedestrians in front of the truck may be almost invisible.

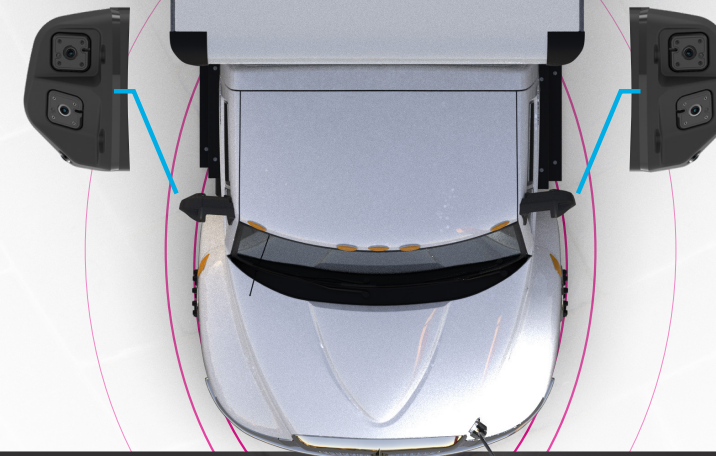
REFLECTION FROM DRIVER'S VIEW - NO ILLUMINATION (HEADLIGHTS ON)



WITH ILLUMINATION

With the new Eye-Max® LED and HD LED® under mounted lights, objects and pedestrians in front of the truck are clearly visible to the driver.

REFLECTION FROM DRIVER'S VIEW WITH ILLUMINATION (HEADLIGHTS ON)



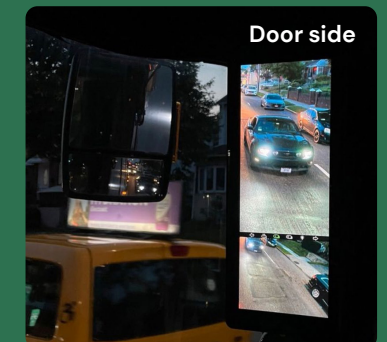
DIGITAL CAMERA & MONITOR SYSTEM

The new mirrorless camera system! Offering better visibility around the vehicle, the Rosco D•CAMS has been engineered to replace exterior rear vision mirrors on commercial vehicles. The digital cameras cover views shown in both the flat lens and convex lens of rear view mirror heads.

Features & Benefits

- Wider & deeper Field-of-View (FOV)
- Smaller blind zones
- Better visibility and brighter images during the day and night
- Clearer images in all weather conditions (cold included!)
- Aerodynamic design offers fuel savings and efficient operations
- Small camera profiles and high mounting locations to prevent impacts with objects.

Low light conditions



Incliment Weather



SAFETY SENSORS

Rosco sensor kits alert drivers to unsafe situations behind a vehicle. Rosco designs flush mount and under-the-bumper sensors for a range of applications. Commercial vehicle backup sensors give drivers the information they need for safe driving & reverse operations.

WIRELESS



BSSK1000
UNDERMOUNT
Rearview bumper ultrasonic wireless undermount sensor kit.

- (4) Undermount sensors
- (1) Transmitter Kit
- (1) Display Panel



BSSK1001
FLUSH MOUNT
Rearview bumper ultrasonic wireless flush mount.

- (4) Flush mount sensors
- (1) Transmitter Kit
- (1) Display Panel

HARD WIRED



BSSK4000
Heavy duty ultrasonic system with 4 rear bumper mount sensors and 2 roof sensors.

- (6) Sensors
- (2) Roof Mount Brackets
- (4) Undermount Brackets
- (1) Control Box
- (1) Display Panel



BSSK4006
Heavy duty ultrasonic system with 4 front and 4 rear bumper sensors.

- (8) Sensors
- (8) Undermount Brackets
- (2) Control Boxes
- (1) Display Panel

BACKUP CAMERA SYSTEMS

STSK7360

Give your drivers an edge in open or challenging cab environments with a waterproof monitor and backup camera system. The heavy-duty heated camera functions optimally to provide the clearest view in the wettest and coldest conditions.



Benefits

- ✓ Waterproof monitor and camera allow for clearer vision in all weather conditions.
- ✓ High-res, digital display and LED-backlit panel enable you to view details clearly and accurately.
- ✓ Add up three additional cameras for a complete view around the vehicle.
- ✓ Heavy duty, heated camera provides 120° FOV, perfect for optimal coverage.
- ✓ InfraRed LEDs provide 30ft of low-light visibility, ensuring drivers have a clear view of their environment.
- ✓ Easily install the monitor on dashboard or overhead location — you choose!
- ✓ Reduce damage to your fleet with this waterproof, industry-resilient monitor/backup camera system.

Features

Camera (STSC107)	Field of View : 120° Night Vision: up to 30' IP67 Rating (Waterproof) InfraRed LEDs : 6 High Output Illumination : 0 Lux (with IR LEDs) Shock Rating: 100G Vibration Rating: 15G Microphone: Built-in
Monitor (STSM207)	Screen Size Diagonal: 7" Maximum Number of Inputs: 4 IP67 Rating (Waterproof) Resolution (Pixels): 800(H) x 480(V) Shock Rating: 100G Vibration Rating: 15G Audio: Included Sunshade: Included
Harnesses (STSH307)	Fakra connections 6 pin - female to male Color: Black Length: 60'

DVXC4 & DV6

Rosco's DV recorders have the capacity to identify unsafe driving behavior through its ability to continuously record video and provide instant driver feedback when an event occurs.



DVXC4

PN: DV440
Comes with 128GB SD.
Also includes DV-PRO® 5 software Fleet Database
Up to 512MB of local storage



DV6

PN: DV660
Comes with 128GB Micro SD.
Up to 1 TB of local storage.
Integrated CAN bus with built-in modem.

Features



# Of Cameras	2 (expandable to 10)	Expandable to 4
Dimensions	3.7" x 4.13" x 2"	5.08" x 2.41" x 4.01"
Camera Specifications	C1: 720p, C2: 960h	C1: 1080p, C2: 1080p
Camera Viewing Angles	C1: 135°Dia, C2: 160°Dia	C1: 116°Dia, C2: 116°Dia
G-Sensor	built-in 3-axis ac- celerometer	built-in 3-axis accel- erometer
Audio	internal microphone for C2	internal microphone for C2
Gps	built-in gps w/ an- tenna	built-in gps w/ an- tenna
Can Bus	no	yes
DMS AI Alerts	available w/ DM100 addition	built-in
Parking Mode	yes	yes
Driver Event Button	built-in / external	built-in
Speakers (Alerts)	yes	yes
Adjustable Video Quality	yes	yes
Adjustable Frame Rate	yes	yes
Light Sensor & IR Leds	yes	yes
Modem	external mini router	built-in
Local Storage	SD (up to 512GB)	micro SD (up to 1TB)
Roscolive Connectivity	optional	required
ADAS	add-on available	no
Driver ID	requires separate hardware DR101	QR-Code scan via DV6 front cam

roscoLiVE®



learn more

Real-time access to videos and data

Event videos from the DV6 cam are available on RoscoLive in real-time via 4G LTE connection – fully tested and certified by major carriers including Verizon, AT&T, and T-Mobile.

Cutting edge technology to future proof your fleet

See where all your vehicles are using a single interface with Google Maps functionality. Watch and flag Event footage, stream live video, or download/share video footage.

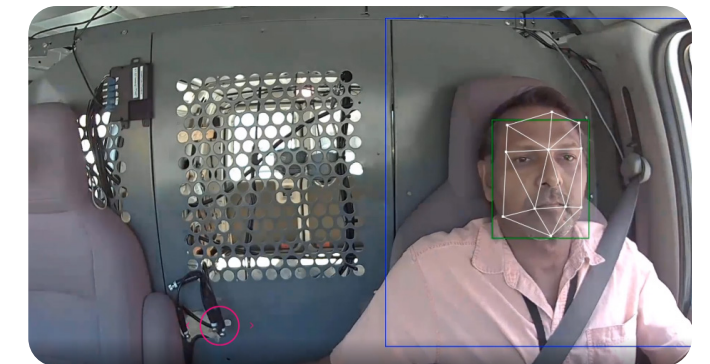


Transforming driver management with RoscoLive

Real-time access to live videos and data with 4G connections – fully tested and certified by major carriers including Verizon, AT&T, and T-Mobile

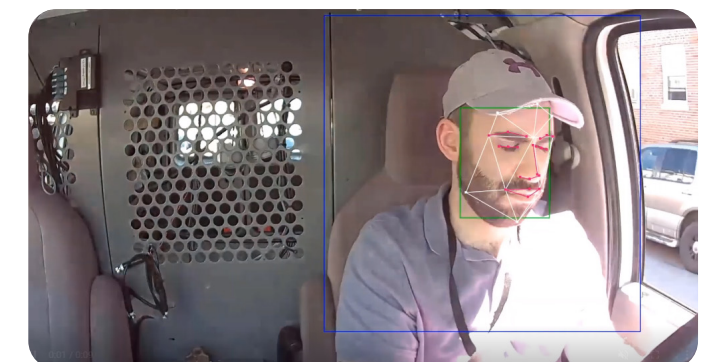
The power of video and data

Rosco helps fleet managers and drivers work together to optimize productivity. Get real insights with DMS and Driver IDs – link videos and events, and analyze driver safety trends with driver identification and



DMS features

Get the whole story – RoscoLive offers customizable datasets on Events, drivers, vehicles, etc. to gather valuable insights for fleet efficiency.



Effortless aintenance with OTA

Over-the-air maintenance let's you manage your hardware and firmware remotely.



rosco
VISION

Over 100 years of automotive vision safety.

PROUDLY SERVICING:

